



Step by step guide to becoming a Cisco Registered Partner



Contents

- Step 1. Become a Cisco Registered Partner
- Step 2. Associate People with your Company

Step 1.

Become a Cisco Registered Partner

Become a Cisco Registered Partner

1. Apply for a Cisco.com (CCO) user ID (if you do not already have one):
<https://tools.cisco.com/RPF/register/register.do>

You will receive an automated response with the assigned ID.

2. Apply to the **Registered Partner Program**

<http://tools.cisco.com/WWChannels/IPA/welcome.do>

- i. Login with your Cisco.com (CCO) user ID and password.
- ii. Select your country of registration.
- iii. Select "Register my Company" and hit continue.

After you have completed the registration form you will receive notification of your acceptance as a Cisco Registered Partner within 24 hours. As a Registered Partner, you will be granted Partner-level access to Cisco.com and will be eligible to participate in the Cisco Channel Partner Program. Status as a Registered Partner is valid for 12 months and must be renewed annually.

Contents

Step 1. Become a Cisco Registered Partner

Step 2. Associate People with your Company

Step 2.

Associate People with your Company

Associate People with your Company

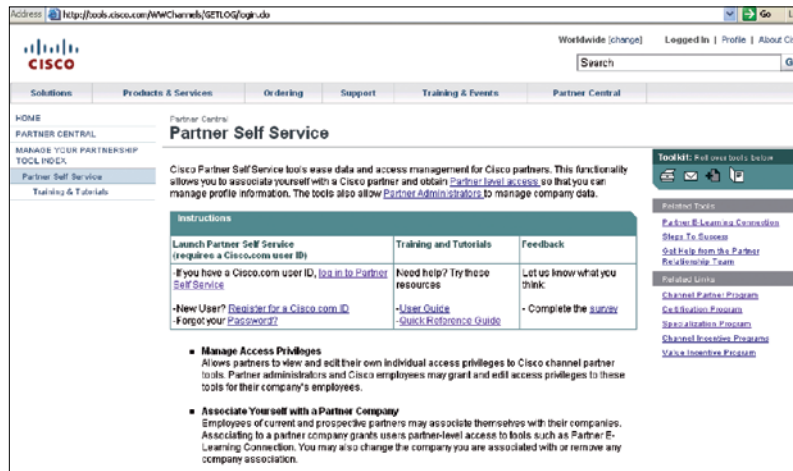
1. Use Partner Self-Service <http://tools.cisco.com/WWChannels/GETLOG/login.do> (PSS) to register your company's details, partner tool administrators and people associated with your company.

i. Partner Self Service User Guide

http://www.cisco.com/web/applicat/partserv/applications_training_tutorial_guest.html

Quick Reference Guides

<http://www.cisco.com/warp/public/765/tools/pss/Reference.html>



Americas Headquarters
Cisco Systems, Inc.
San Jose, CA

Asia Pacific Headquarters
Cisco Systems (USA) Pte. Ltd.
Singapore

Europe Headquarters
Cisco Systems International BV
Amsterdam, The Netherlands

Cisco has more than 200 offices worldwide. Addresses, phone numbers, and fax numbers are listed on the Cisco Website at www.cisco.com/go/offices.

© 2008 Cisco Systems, Inc. All Rights Reserved. CCDE, CCENT, Cisco Eos, Cisco Lumin, Cisco Nexus, Cisco StadiumVision, the Cisco logo, DCE, and Welcome to the Human Network are trademarks; Changing the Way We Work, Live, Play, and Learn is a service mark; and Access Registrar, Aironet, AsyncOS, Bringing the Meeting To You, Catalyst, CCDA, CCDP, CCIE, CCIP, CCNA, CCNP, CCSP, CCVP, Cisco, the Cisco Certified Internetwork Expert logo, Cisco IOS, Cisco Press, Cisco Systems, Cisco Systems Capital, the Cisco Systems logo, Cisco Unity, Collaboration Without Limitation, EtherFast, EtherSwitch, Event Center, Fast Step, Follow Me Browsing, FormShare, GigaDrive, HomeLink, Internet Quotient, IOS, iPhone, iQ Expertise, the iQ logo, iQ Net Readiness Scorecard, iQuick Study, IronPort, the IronPort logo, LightStream, Linksys, MediaTone, MeetingPlace, MGX, Networkers, Networking Academy, Network Registrar, PCNow, PIX, PowerPanels, ProConnect, ScriptShare, SenderBase, SMARTnet, Spectrum Expert, StackWise, The Fastest Way to Increase Your Internet Quotient, TransPath, WebEx, and the WebEx logo are registered trademarks of Cisco Systems, Inc. and/or its affiliates in the United States and certain other countries.

All other trademarks mentioned in this document or Website are the property of their respective owners. The use of the word partner does not imply a partnership relationship between Cisco and any other company. (0805R)

Contents

Step 1. Become a Cisco Registered Partner

Step 2. Associate People with your Company